

Background

This functionality is all about capturing parameters that will be used to run reports. The exact parameters available, and whether they are entered via dddw, list box, or text box vary from report to report. This parameter info is stored on the main DB for each report.

When dddws are used, usually the data comes from a local cache via ODBC Text driver. For certain data items, the data comes from the main DB.

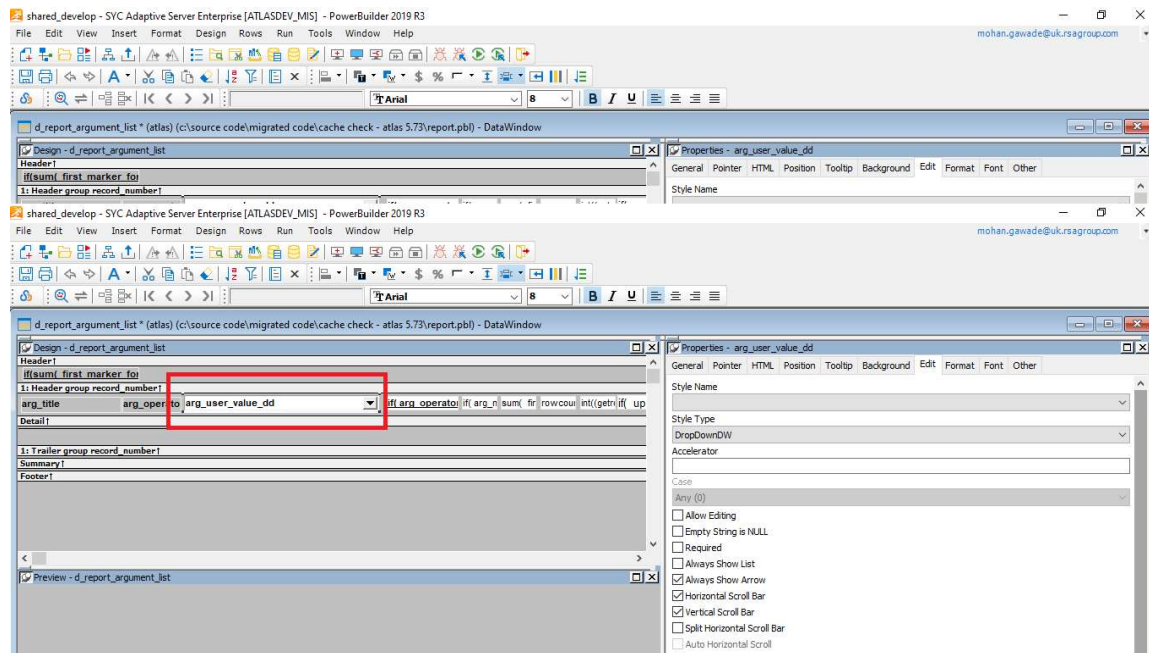
For this report, we have 4 dddw. Account (dddw_account_type) is getting it's data from the main DB via SQLCA but the other three are getting data from the local cache. All data connections are fine, and data is pulled to all 4 dddw, but the Account one is behaving oddly.

Notes:

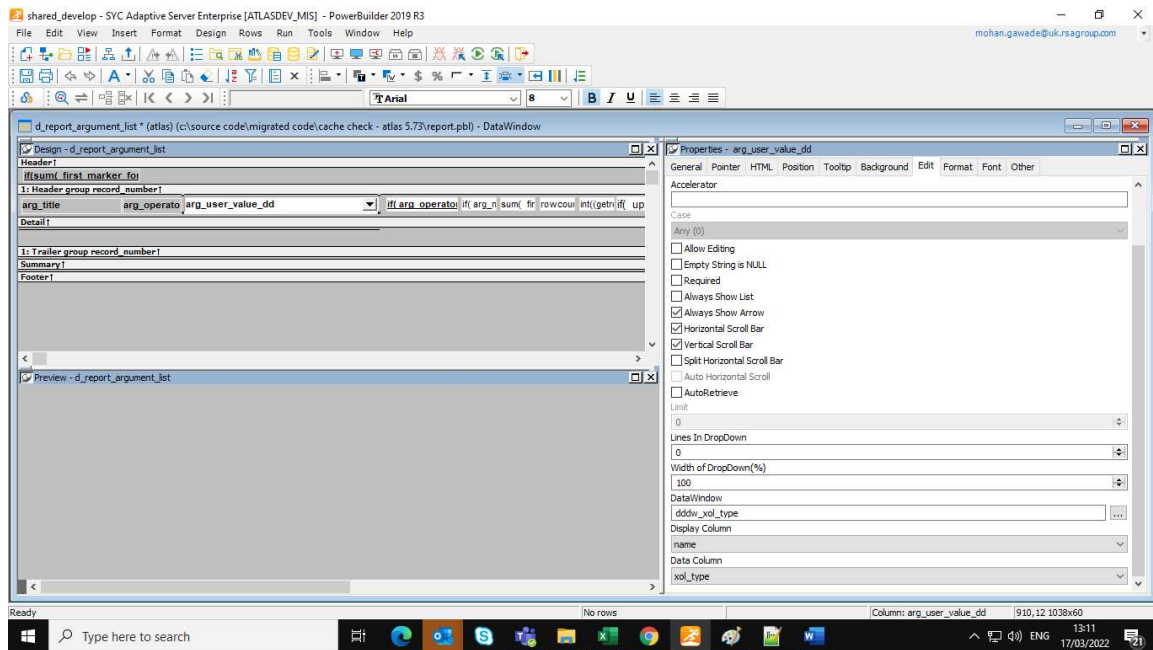
This code was working fine in PowerBuilder 8 but after migration to PowerBuilder2019 R3, 3 of the 4 dddw work as expected but it's not functioning correctly for account_type dddw.

Please find below screenshot of the code :

Prt Scr. 1 : Primary datawindow object which is used to shared data from all 4 dddw.



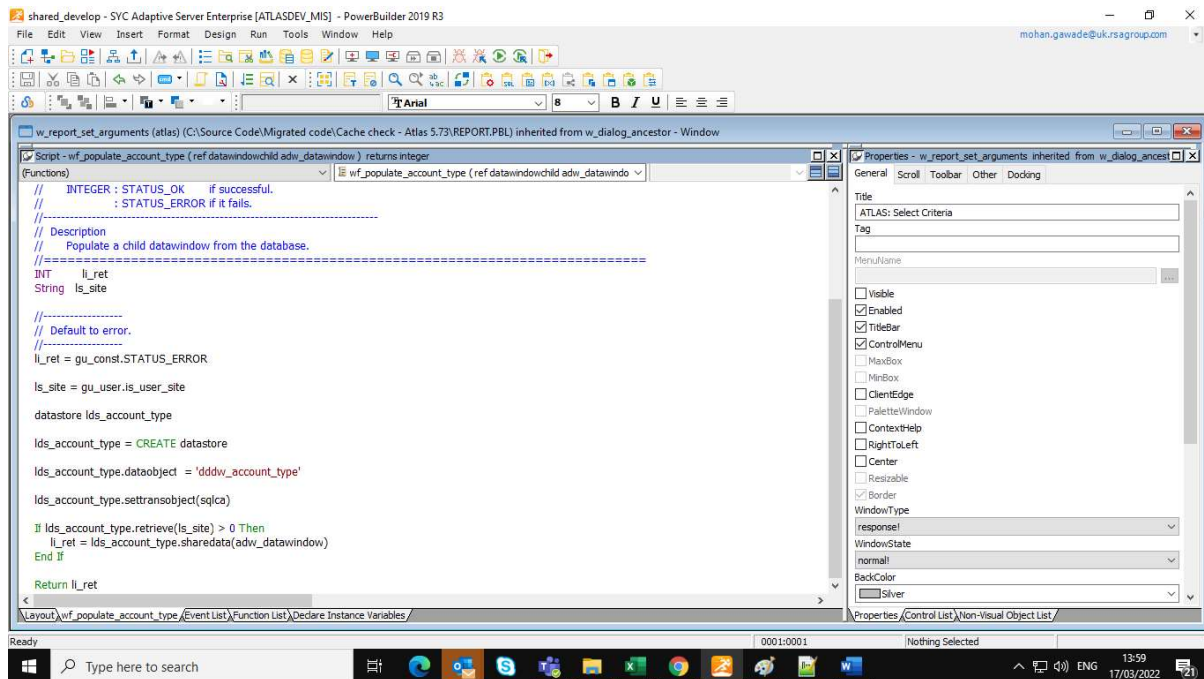
Prt. Scr. 2 : The remaining part of Prt Scr. 1



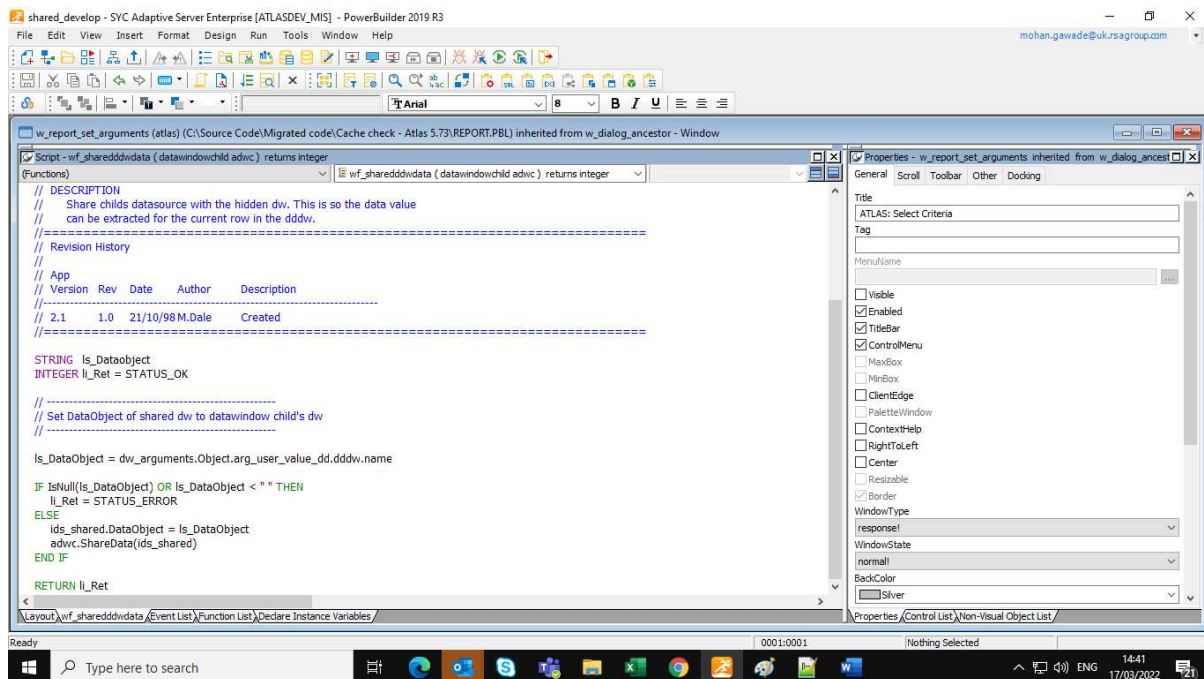
Prt. Scr. 3 : Below highlighted code user for account_type/problematic dddw choose



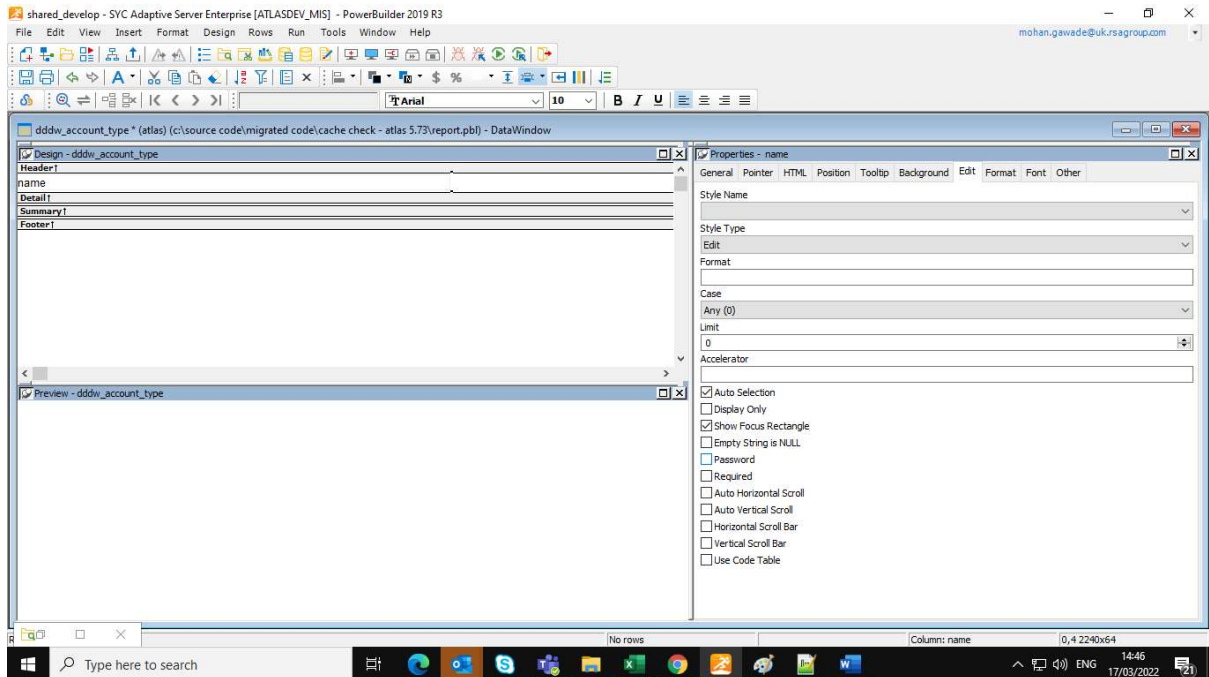
Prt. Scr. 4 : wf_populate_account_type(ldwc)



Prt. Scr. 5 : wf_ShareDDDWDData(ldwc)



Prt. Scr. 5 : dddw_account_type Properties



Prt. Scr. 6 : dddw_currency Properties

